

# ASSEMBLY INSTRUCTIONS



SCAN FOR MORE  
INFORMATION

**GATOR**  
frameworks  
08.26.2020 - REV:A

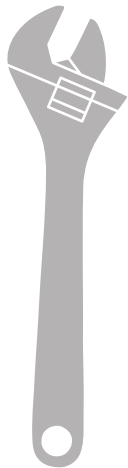
## BEST PRACTICES:

- Always use caution when moving a load on utility cart.
- When using cart be careful not to pinch fingers.
- Never overload the cart, this may cause cart failure and will void warranty. **(Max 500lbs)**
- Always lock casters when loading equipment on uneven surface, and when parked.  
**(Use wheel blocks if load is heavy)**
- When possible use bungee straps to keep gear affixed to cart platform.
- Always use caution if using in extended position, have a helper navigate when possible.

## GATOR PROMISE:

Gator Frameworks is dedicated to producing the highest quality products and accessories. We back up that commitment with a 3 year Warranty on any manufacturing defects in material and workmanship. This warranty applies to the original owner and requires proof of purchase. Our warranty entitles the original owner repair or replacement of the product, or replacement with a comparable product of similar value and condition at our discretion. This warranty is limited to Gator Frameworks products only and excludes loss of personal property, loss of use, accidental damage, misuse, or normal wear and tear.

## RECOMMENDED TOOLS (WHEEL ATTACHMENT)



Adjustable  
Crecent Wrench



Channel Lock  
Pliers



Needle Nose  
Pliers



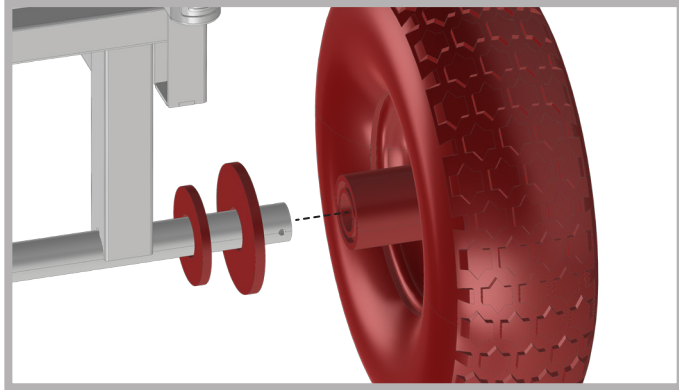
**ALL-TERRAIN UTILITY CART 52**  
**GFW-UTL-CART52AT**



5112 W. Linebaugh Ave. • Tampa, FL • Phone: (+1) 813.221.4191 • Fax (+1) 813.221.4181  
Visit [GatorCases.com](http://GatorCases.com) for more service & product information • All rights reserved Gator Co.

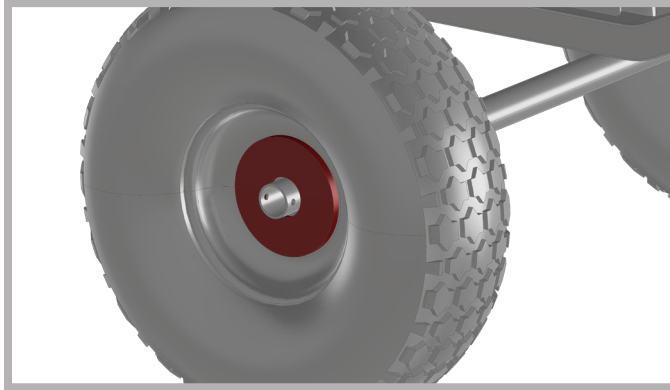
# ASSEMBLY INSTRUCTIONS

## 1. Rear Wheel Installation



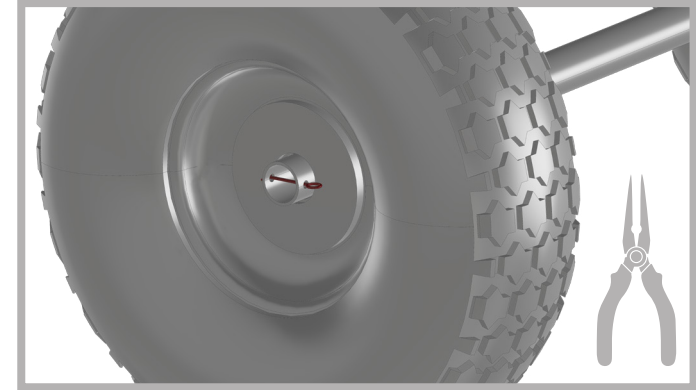
Gently slide small washer, then large washer onto rear axle. Then slide wheel onto the axle.

2.



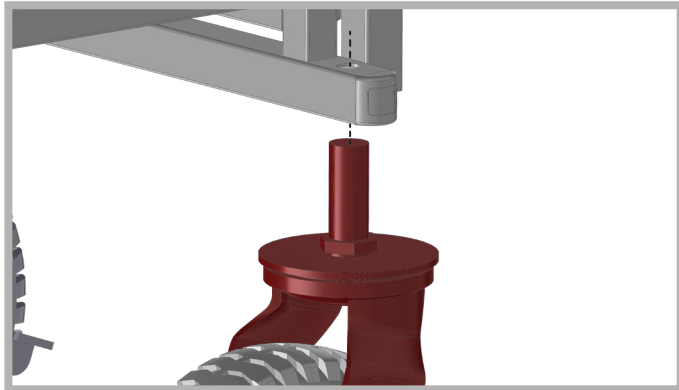
Next, place another large washer on wheel outside.

3.



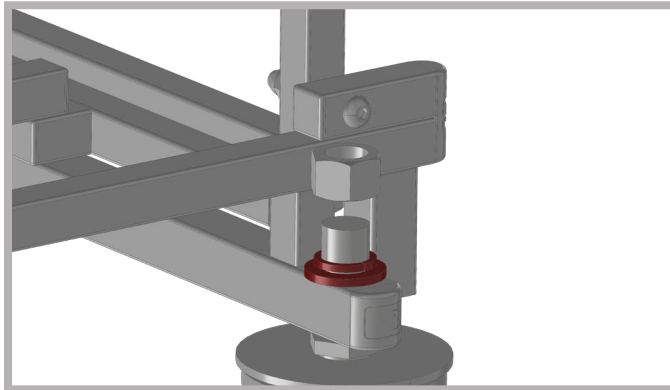
Finish with inserting cotter pin into hole and bending ends backward at 90 degrees with pliers.

## 4. Front Swivel Caster



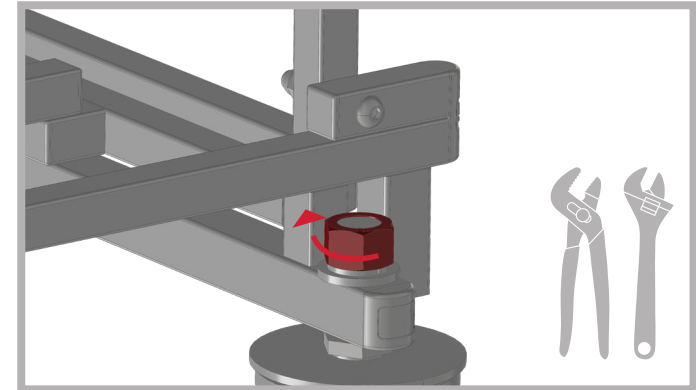
Slide top of swivel caster upwards into the front axle hole.

5.



Next, place small washer then lock washer onto threads of swivel caster.

6.



Finish by tightening nut onto caster using wrench and channel lock pliers. Tighten firmly until lock washer no longer rotates.

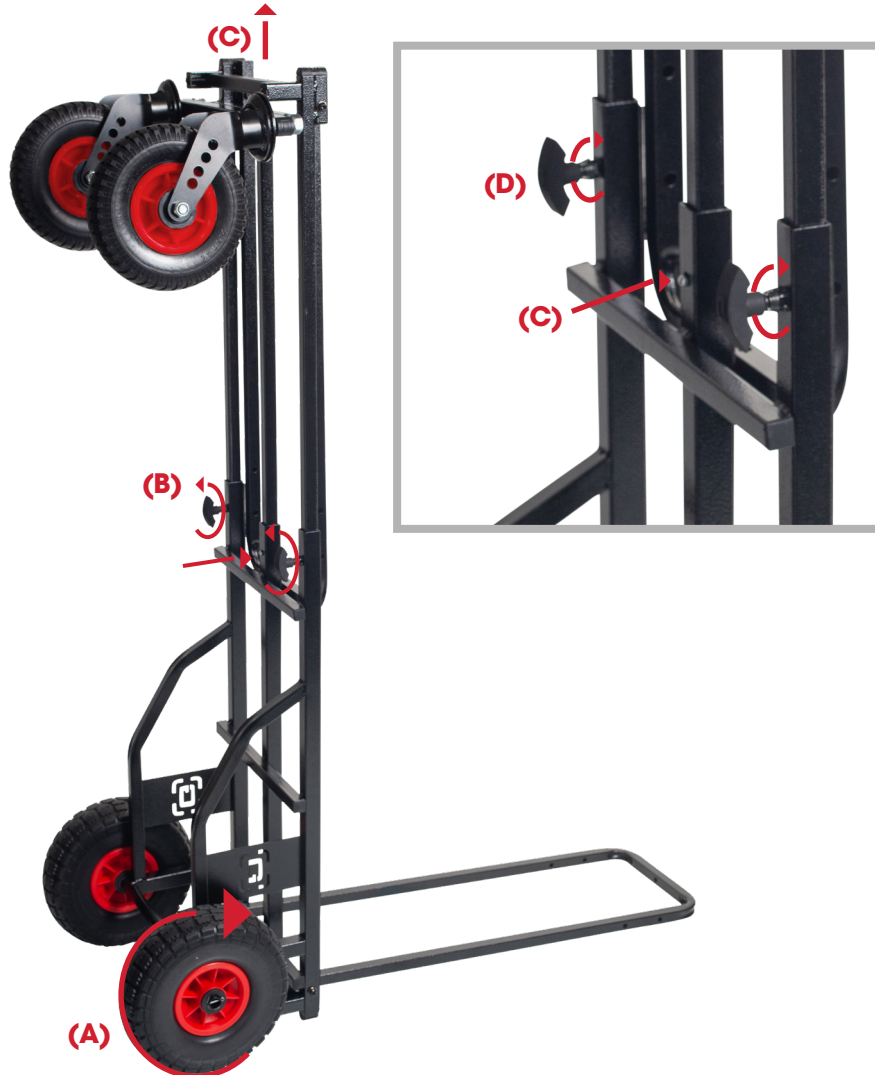
### CAUTION

Periodically check cotter pin on rear wheel and tighten nut to insure swivel caster is securely connected to axle.

# ASSEMBLY INSTRUCTIONS

## 7. Cart Extension

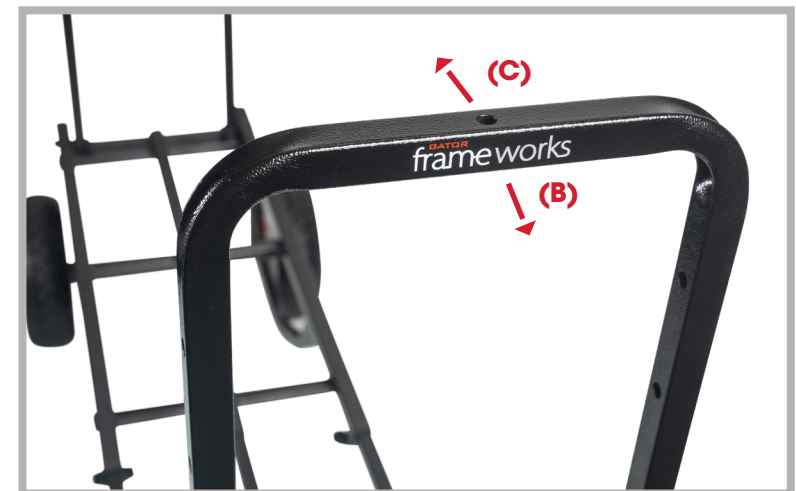
- (A) To extend loading frame of cart, tilt cart upwards.
- (B) Loosen the crescent knobs counter-clockwise, press in the extension stop button.
- (C) Pull upward on the frame until the stop button engages into the hole.
- (D) Retighten the crescent knobs clockwise.



**GFW-UTL-CART52AT**

## 8. To Fold Handles

- (A) Firmly step downward onto the bar marked "Step Down"
- (B) Grab handle end and pull upwards until the handle locks into position
- (C) To fold, "Step Down" on bar and push handle downwards into lock position



# ASSEMBLY INSTRUCTIONS

- Utility cart transforms into **8** different configuration options
- Never overload the cart, this may cause cart failure and will void warranty. **(Max 500lbs)**
- Always lock casters when loading equipment on uneven surface, and when parked.  
**(Use wheel blocks if load is heavy)**
- When possible use bungee straps to keep gear affixed to cart platform

## 8-IN-1 CONFIGURATIONS

### SPECIFICATIONS

Compact Overall:	34.5 x 19.25 x 13.5in (876 x 489 x 343mm)
Extendable Length: Min - Max	30.15 - 52in (766 - 1321mm)
Wheel Size: Front & Rear	8in (203mm) & 10.25in (260mm)
Material:	Tubular Steel with Plastic Wheels & Polyurethane Foam Tires
Finish:	Black Powder-Coated
Weight:	38lbs (17.2kg)
Weight Capacity:	500lbs (225kg)



**#1 COMPACT  
DUAL-HANDLE**



**#2 COMPACT  
SINGLE-HANDLE**



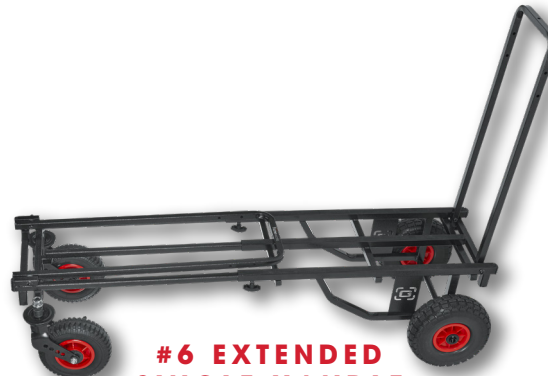
**#3 COMPACT  
COLLAPSED**



**#4  
COMPACT  
UPRIGHT**



**#5 EXTENDED  
DUAL-HANDLE**



**#6 EXTENDED  
SINGLE-HANDLE**



**#7 EXTENDED  
COLLAPSED**



**#8  
EXTENDED  
UPRIGHT**